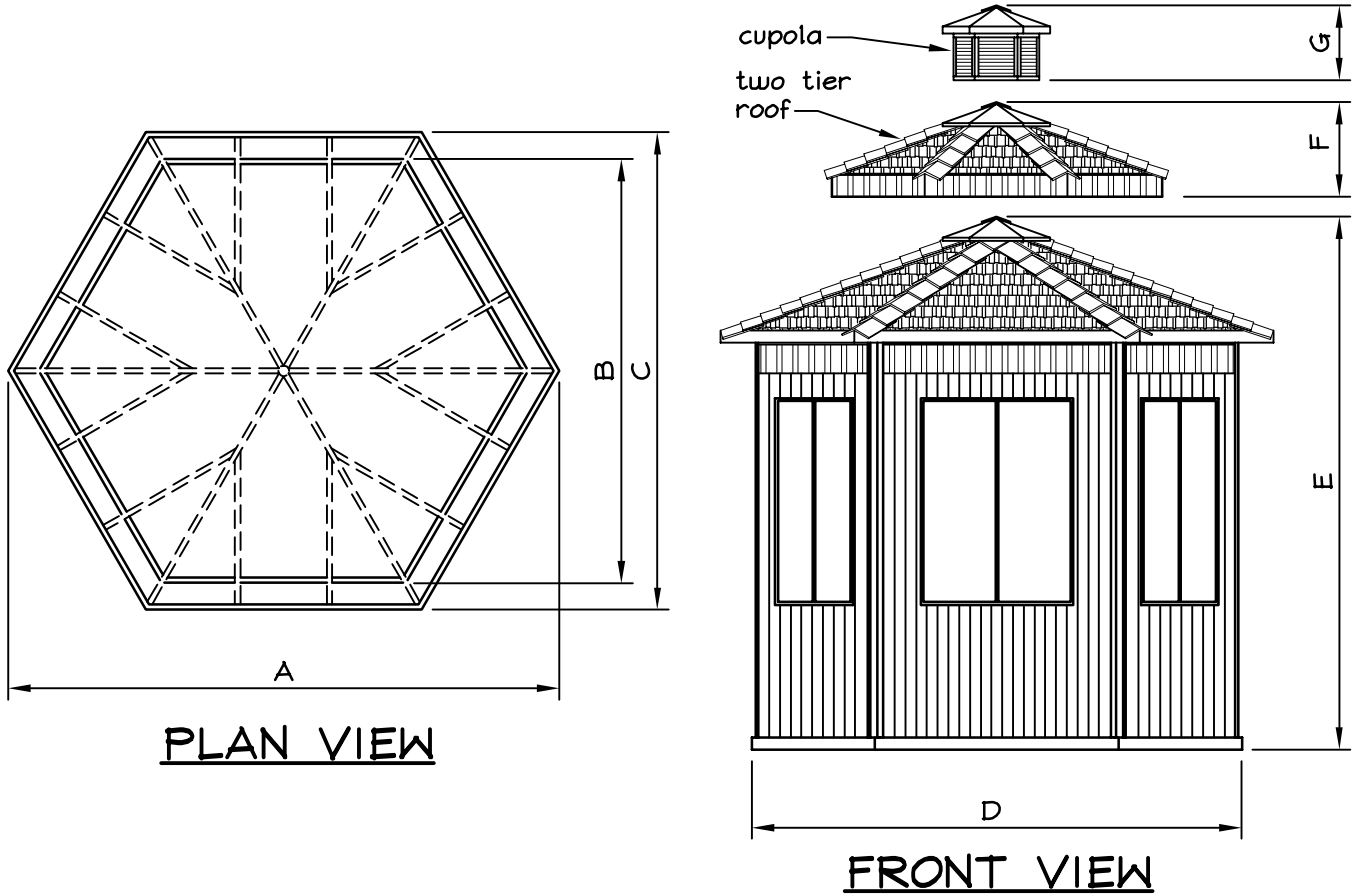


# ALL SEASON HEXAGON GAZEBO SPECIFICATIONS

All Gazebos are constructed of 100% Western Red Cedar.  
 All framing components are nominal 2"x4" in size.  
 Wall posts consist of 2 - 2"x4" fastened together.



Measurements For All Season Hexagon Gazebo	
Dimensions (Imperial)	
Size	10'
Area	85 Sq. Ft.
A	12'-10"
B	9'-10"
C	11'-1"
D	11'-4"
E	10'-4"
F	10"
G	1'-0"
Window Opening	3'-5 3/4"x3'-5 3/4"
Door Opening	3'-3 1/2"x6'-3"
Weight	2200 lbs
Panelized Package Size	72"Wx87"Lx75"H

Note - Two tier roof and Cupola are optional